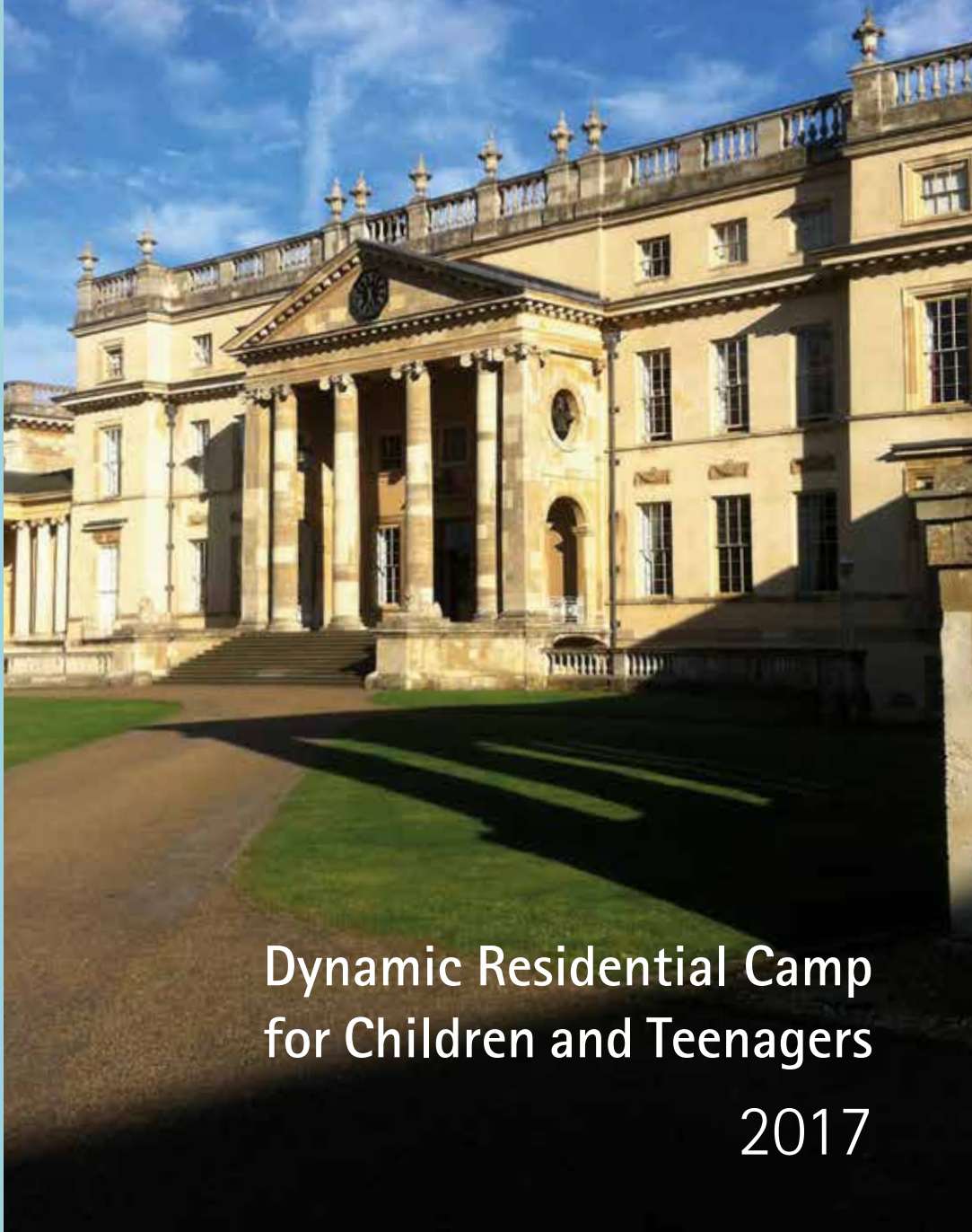


# Regent Language Training

# Regent at Stowe



Dynamic Residential Camp  
for Children and Teenagers

2017



## Stunning Residential Stowe School

- Impressive architecture and grounds
- Excellent sports facilities
- The perfect setting for learning

The exceptional Stowe School is one of England's most prestigious boarding schools and is set in 750 acres of outstanding parkland. It has impressive sporting and leisure facilities. Stowe is easily accessible – it is 6km from the town of Buckingham, 45 minutes from Oxford and 90 minutes from London.



**Age Range** 7-12, 13-17 years

**Class Size (max)** 12

**Level** From Beginner to Advanced

### Facilities

Indoor swimming pool, astroturf, football pitches, tennis courts, sports hall

### Location

6km from Buckingham

Closest airport – London Heathrow

### Accommodation

7-12 Campus: bedrooms sleeping 1-4

13-17 Campus: singles, twins and dormitories

### Activities

Basketball, football, discos, music workshops, talent nights and team games

### Excursions

Oxford, London and Stratford upon Avon

# Regent at Stowe



## Exclusive. Impressive. Stimulating.

Our summer camp at Stowe provides students with an experience of a lifetime, in an incredible environment for learning and personal development.

### All English – designed around the students' interests

On our All English courses students are immersed in a stimulating educational environment. These intensive, action-packed courses include 21 hours per week of structured English language lessons and team performance projects, plus six hours of afternoon sports or activities geared to the students' interests followed by lively activities every evening.

#### All English - Senior

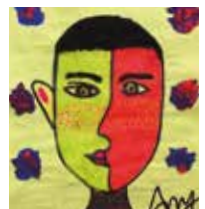
Students aged 13-17 have Language Skills and Language Structure lessons, followed by Interest Based Learning which nurtures academic success, encourages critical thinking and utilises their interests in life - Sports & Health, Music & Performing Arts, Art & Design, or Science & Technology.

#### All English - Exam

For students age 13-17 we offer preparation for the IELTS, Cambridge: First (FCE) and Cambridge: Advanced (CAE) exams. FCE and CAE students can take the exam on site during the course. The programme includes 11 hours of Exam Preparation and 10 hours of Language Structure and Skills.

#### All English – Junior

Younger students (age 7-12) have dedicated course leaders and teachers, skilled at engaging youngsters and helping them interact in English. The Junior programme includes lessons, performance projects and engaging activities specially designed for younger learners.



# The perfect setting for a special summer camp

## Developing leadership and teamwork

We go beyond just language learning and help students to develop skills of team working and leadership, decision making and in presenting. We place each student in an international team, which encourages a sense of belonging and creates a safe and welcoming environment. Students win Regent Lion points for their team for exemplary behaviour and successful activities, which creates competition within a positive atmosphere and boosts their confidence to join in and express themselves. As the course progresses, students often feel more confident as we help them build their identity as an English language speaker.



## Typical timetable (All English - Senior)

08.00	Breakfast
09.00–09.30	Morning meeting
09.30–10.30	Language structure
10.45–11.45	Language skills
12.00–13.00	Interest based learning
13.00–14.00	Lunch
14.00–15.30	Performance project
16.00–17.30	Active session
18.00–19.00	Dinner
19.00–20.00	Homework and daily review
20.30–22.00	Evening Activity
22.30	Bedtime

## Belonging to our community

The morning assembly is a lively and energetic start to the day in which students learn the phrase of the day and engage with staff and other students. At mealtimes our staff join the students in their teams. In the evenings we arrange lively activities like Talent and Fashion Shows, Murder Mysteries, Scavenger Hunts and Casino Nights.

## Confidence in performing

This session challenges students to question the world around them and to discuss, compare and evaluate what they discover. Over the course of a week they follow a performance project in their teams which culminates in making a film, drama, debate or a presentation in which they showcase their learning.

## Releasing energy and talent

All students have an activity session filled with a variety of sports or other activities. Sports include rugby, football, music, basketball and the use of the swimming pool on campus. We offer engaging alternatives to sport such as Art and Design, or Music and Performing Arts.



# Positive – Inclusive – Results focused

## Living on campus

Stowe has excellent facilities and is a safe and secure environment. Students have a single room or share with different nationalities. Girls and boys are accommodated separately. All meals are taken in the impressive dining room at the school, except on excursion days when packed lunches are provided. The schools operate a banking service for pocket money and lockable storage facilities for valuables. Staff are residential and live on site with the students to ensure 24 hour supervision and care.



## Becoming more cultured

Each week we take students on a half day excursion to a local place of interest, and a full day Saturday excursion to great cities like Oxford, London and Stratford upon Avon. We help them to get the most from their trip by preparing them in advance with observation tasks or lively photo challenges.



## Being international

In 2016 23 different nationalities studied with us at Stowe, with no more than 11% of any one nationality represented. Students at Stowe have a truly international experience.

Regent was established over 50 years ago in 1964 by a passionate, experienced teacher who ran his first summer school in 1965. Our core values shine through our programmes:



### Positive

We believe that everyone can learn to use English proficiently; we push each student to become an effective communicator. We create a positive, enjoyable environment praising effort and attitude and encouraging every individual to achieve their best.

### Inclusive

Every student is in several different classes or teams. We arrange whole course activities so that students quickly feel part of the group, and can connect meaningfully with staff and other students.

### Results focused

Our courses are educationally-led and designed to ensure robust progress. A coaching session, daily homework sessions and weekly tests help students to set goals and visualise progress. They create a learning portfolio throughout their stay to record results and achievements. At the end of the course students receive a Certificate and progress report.



## Regent at Stowe Courses fees

### All English – Senior, Junior, Exam

Length of course	Dates	Fees
2 weeks	09.07-22.07 23.07-05.08 30.07-12.08	£2,430
3 weeks	09.07-29.07 23.07-12.08	£3,600
4 weeks	09.07-05.08	£4,760
5 weeks	09.07-12.08	£5,925

### Exams offered

FCE, CAE, IELTS

FCE exam date: 27.07; CAE exam date: 20.07

Cambridge exam fee £180 not included

### What's included

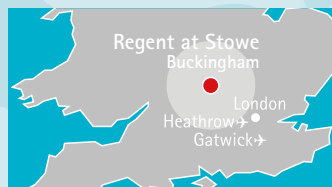
Full board accommodation, tuition and supervised activity programme including 1 full day and 1 half day excursion per week, Certificate of Achievement, transfers from Heathrow or Gatwick between 10.00-19.00 on our Sunday start dates, with return flights on Saturday between 12.00-19.00. Not included in the fees are individual taxis outside our standard times at £110 (one way) from Heathrow or Gatwick to Stowe, £50 key/damage deposit (collected on arrival at Stowe and refundable provided no loss or damage has occurred).

### Transfers

For arrivals into Heathrow and Gatwick airports we provide a Welcome Lounge on our start and finish dates. Here students wait for their onward transfer to Stowe in comfort and safety in a supervised environment, and food and drink is served. We provide outdoor sports such as football, basketball and volleyball and indoor activities such as table tennis and a cinema showing English films.

### Assistance

A 24 hour emergency contact line is in place throughout the duration of all courses.



Accredited by the  
**BRITISH COUNCIL**  
for the teaching  
of English

**ENGLISH UK**  
member

## Regent Summer Schools

12 Buckingham Street, London WC2N 6DF

summerschools@regent.org.uk

+44 (0) 20 7872 6622

www.regent.org.uk

