

Regent Language Training



English fluency
for life in the world community
2015

www.regent.org.uk





Contents

Your life with Regent
Achieving your goals

Courses

English World
Exam Preparation
Executive ClasSIX
Home Tuition

Locations

England

Bournemouth
Brighton
Cambridge
London
Oxford

Scotland

Edinburgh

Terms and Conditions
Enrolment Form



- To make your journey easy, we can arrange for an individual transfer to your accommodation from all the major airports.
- Learn English quickly – individual assessment of language level and needs means you learn effectively.
- Our teachers are carefully chosen for their professionalism, qualifications and experience.
- We are here to help and are proud of our customer service.
- Small class sizes of 6 or 12 help you make fast progress.
- Cultural visits and social events allow you to relax and practise your English.
- Many courses have weekly start dates so you can start your course any Monday.
- Free internet and email at all schools keeps you in touch with friends and family.

Welcome to Regent

- English Language training that creates life-changing opportunities for work and study
- Highly structured courses leading to confidence and competence in English, as well as enhanced life, cultural and performance skills
- Small class size of 6 or 12 for accelerated progress
- A choice of academic and culturally rich locations
- Outstanding customer service for the complete Regent experience
- Over 50 successful years of transforming our students into influential global communicators

A positive and rewarding language learning experience

A course with Regent can change your life - providing you with the knowledge, skills and performance in a second language which help you to excel in your job, win a promotion or a place at university. Whatever your goal we help you to achieve it while we challenge you to set yourself even more demanding targets. Our unique course design, highly effective methods and positive, professional teachers all help to create a dynamic learning environment.

We have schools in great locations in England and Scotland. Each school is centrally located and offers a comfortable learning environment equipped to help you achieve.

Our schools are multinational environments and there are lots of opportunities to use English. By the end of the course many of our students see themselves in a new light - as successful members of a global community.

We look forward to meeting you on a Regent course.

Regent Promise

When you study with us you get more than just lessons in a classroom. Our programmes can be life changing. Wherever you study, the Regent Promise is your mark of quality on our unique courses.

Each student has:

- a welcome and orientation on their first day
- an individual assessment of language ability and needs
- regular coaching sessions with a personal tutor
- the chance to take an exam
- video feedback on their spoken performance
- a group project to develop international team working skills
- use of multi-media and study resources on all courses
- an activity and excursion programme
- counselling for future work or academic life





Your life with Regent

Our courses can be life changing for you in many ways – through exam or work success, by making life-long friendships or business contacts, or by seeing yourself as a different, more confident person in English.

The learning experience

We are passionate about your learning experience and work hard to ensure that you leave us with significantly developed skills, confidence and performance in English.

We have a strong academic framework to help you learn quickly and effectively. We have a unique academic programme, with a syllabus linked to the Common European Framework. As well as grammar, vocabulary and pronunciation, we work on your spoken performance with tasks focusing on body language, voice quality and eye contact. We ask you to work in international teams to develop useful life skills and encourage you to take at least one exam. We set progress tests and structured homework tasks to provide clear support to your learning. Teachers have high expectations of you to help you achieve the best you can.

Learning outside the classroom

Learning does not only happen in our lessons but continues outside the classroom. Throughout your time with us we want to help you practise your English skills – in the school lounge, in your homestay and out at social events. That is why we make the school a welcoming and inclusive place where you can easily make friends and build your confidence in another language.

Whether by interacting with friends at school or in your accommodation, we encourage you to practise your language and think and act in English. The activities we ask you to do enable you to express your interests and views. By the end of the course many students feel that they are different – having a new identity as a confident English speaker.

A typical Regent week

Monday – Friday

- 09.00–12.30 Morning language skills lessons
- 12.30–13.30 Lunch - socialise with friends in the student lounge, use the internet, relax, read newspapers
- 13.30–15.45 Afternoon communication skills lessons
- 15.45–16.00 Break
- 16.00–17.00 Individual lessons or self-study or Language in Leisure activity
- Evening Homework, dinner, talk to host family, or go out with school staff and friends

Weekend

- Saturday Full-day excursion with Regent school friends to local places of interest
- Sunday With host family or meet friends in afternoon at Regent school to socialise, use the internet and relax

Timetables are samples and may be subject to change.

Accommodation to enhance your experience

We know how important your accommodation is, and so we offer a wide choice.

Homestay

Many students choose homestay – living with local people in their own home. Living with a family gives you the opportunity to practise what you have learned in your lessons and an authentic cultural experience.

Self-catering or residential accommodation

This option gives you more independence and allows you to experience life in a student residence. The residences used are often university-style accommodation.

Hotels and Apartments

Alternatively, we offer a range of hand-picked hotels and apartments. Please contact us for more information.

Language in Leisure activity programme

Our Language in Leisure social and activity programme is designed to help you enjoy your location, make new friends and to discover modern local culture.

Often accompanied by your teachers or other school staff, this is the perfect way to have a great time with your friends, practise your English and experience our authentic local culture.

At least two events are included each week. The weekly programme includes activities such as a barbecue, film night, quiz night, trip to a local pub or sports activity.

Weekends and evenings

Typical excursions include: London's West End, Stonehenge, Loch Ness, Leeds Castle, Oxford, Cambridge and overseas trips to many cities in Europe.

On most Sunday afternoons we open our schools so that you can meet up with your friends, study and socialise in a friendly and welcoming environment. We have flat screen TVs, wireless internet and student computers in all our schools, as well as student lounges and study facilities.





Become international with Regent

Learning English with Regent is a path towards the ultimate goal: your international identity. We not only help you make real progress, but to go beyond language learning and develop life skills.

Your progress matters to us

You can expect to make good progress every week. We assess your abilities and help you clarify your goals, and set realistic and achievable sub-goals along the way. The longer you stay the more your English improves, and the more you can expect us to challenge and push you to go further.

- We build your confidence
- We provide clear academic structure and rules to help you learn effectively
- We encourage you to take examinations
- We enable you to learn outside lessons
- We help you to achieve your goals

Your teacher

We believe that our teachers are our greatest strength and are the main reason for the success of our students. Our teachers are passionate about teaching and about helping you to develop your English language skills.

We use a variety of effective teaching techniques to help you learn quickly.

60 minute lessons

Lessons are 1 hour (60 minutes) long.

Individual attention

Courses have a maximum of either 6 or 12 students per class.

Personal coaching

To guide and support your learning you have a personal tutor who challenges and motivates you to achieve your goals in a weekly 15 minute one-to-one coaching session (on English World 33 and Exam Preparation programmes).

University counselling service

We offer a free educational counselling service to our students. Our educational counsellor assesses your skills and advises you on the best courses and universities for you. We provide help with the application process and advise you on what academic and IELTS grades are required for each university course.

Regent prepares you for life in the world community

Whether your aims are ultimately to become an international professional or you want to communicate with ease beyond your country's borders, Regent will give you the skills and the confidence to behave internationally in multi-national circles.

Regent courses are designed to take you beyond a good command of the English language. The structure of the language becomes instinctive with daily practice.

More importantly, the course focuses on using the language in an authentic international environment. Authentic communicative role-plays encourage you to discuss and present your arguments with conviction and train you in how to convince others. Workshops that widen knowledge of world cultures, history and the arts will open the gates for you to understand and engage with anyone in the world.



Whatever your level, we prepare you for and push you towards taking an external English language qualification to reflect your achievement and validate your progress.

	Beginner	Elementary	Elementary to Pre-intermediate	Pre-intermediate to Intermediate	Intermediate to Upper Intermediate	Upper Intermediate to Advanced
Exam options available	IELTS 1 BULATS	IELTS 2-3 BULATS	IELTS 4 BULATS TOEFL new score up to 133 Cambridge KET	IELTS 4-5 BULATS TOEFL new score 133-173 Cambridge PET	IELTS 6-7 BULATS TOEFL new score 173-250 Cambridge FCE	IELTS 8-9 BULATS TOEFL new score 250-280+ Cambridge CAE/CPE
Common European Framework	A1	A2	A2 / B1	B1	B2	C1 / C2





English World Courses

- Improve your knowledge, skills and confidence in using English
- Crystallise your goals and future through personal coaching
- Enhance your life skills by going beyond language learning
- Groups of 12 for a dynamic international arena in which to practise English

English World courses are designed to have an impact on the present and future life of the learner in an international environment. Our unique programme has five complementary elements that give learners the tools they need to operate confidently and successfully when using English as an international language.

The Skills Training develops your reading, listening, writing and study skills in English according to your needs.

The Accuracy in Grammar session perfects core grammar skills and works on the eradication of common errors.

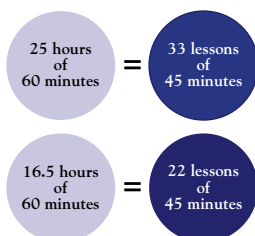
The Knowledge for a Global Community class is at the centre of the course. Through individual and team-based research, students work on a broad range of historical, economic, sociological, artistic and cultural topics designed to equip them with the knowledge to function more effectively in the global community. Students present their findings in a range of debates, presentations, and pair and group work activities.

In the Language Focus session the core skills are brought to life by active practice in authentic contexts.

In the Confident Spoken Performance session you develop your confidence and skills in a range of speaking situations through mini role-plays, presentations and public speaking activities. With a focus on rapport building, voice quality, body language, posture and eye contact, the aim is for confident performance in a second language.

Personal Coaching

Every full time student receives a 15 minute coaching session each week, in which goals are set or reappraised, and progress and course work reviewed. On longer courses we stretch learners by setting additional tasks on which the personal tutor provides feedback.



English World 33

This intensive course comprises 25 hours (one hour = 60 minutes) of study per week.

Sample Timetable

09.00 - 10.00	Skills Training
10.00 - 10.15	Break
10.15 - 11.15	Accuracy in Grammar
11.15 - 11.30	Break
11.30 - 12.30	Knowledge for a Global Community
12.30 - 13.30	Lunch
13.30 - 14.30	Language Focus
14.30 - 14.45	Break
14.45 - 15.45	Confident Spoken Performance

Timetables are samples and may be subject to change.

Fees per week

Bournemouth, Brighton, Edinburgh, Cambridge, Oxford

No of weeks	2-3	4-7	8-11	12-52
English World 33	£382	£357	£332	£307

London

No of weeks	2-3	4-7	8-11	12-52
English World 33	£416	£391	£366	£341

English World 33: 25 hours of group classes per week, plus one coaching session per week

- For a 1 week course, add a supplement of £85 to the 2-3 week price above

English World 22

This course comprises 16.5 hours (one hour = 60 minutes) of study per week. Morning timetable as above plus three 30 minute sessions per week in the afternoon.

Bournemouth, Brighton, Edinburgh, Cambridge, Oxford

No of weeks	2-3	4-7	8-11	12-52
English World 22	£280	£275	£265	£255

London

No of weeks	2-3	4-7	8-11	12-52
English World 22	£300	£295	£285	£275

English World 22: 16.5 hours of group classes per week

- For a 1 week course, add a supplement of £85 to the 2-3 week price above

Dates

Courses start every Monday throughout the year. Students should arrive on the Sunday.

English World Combination

Make your course more intensive by adding 5 hours of 1:1 lessons to the English World 33 course.

Sample Timetable

09.00 - 10.00	Skills Training
10.00 - 10.15	Break
10.15 - 11.15	Accuracy in Grammar
11.15 - 11.30	Break
11.30 - 12.30	Knowledge for a Global Community
12.30 - 13.30	Lunch
13.30 - 14.30	Language Focus
14.30 - 14.45	Break
14.45 - 15.45	Confident Spoken Performance
15.45 - 16.00	Break
16.00 - 17.00	Individual lesson (1:1)

Timetables are samples and may be subject to change.

Fees per week

Bournemouth, Brighton, Edinburgh, Cambridge, Oxford

No of weeks	2-3	4-7	8-11	12-52
English World Combination	£736	£711	£686	£661

London

No of weeks	2-3	4-7	8-11	12-52
English World Combination	£800	£775	£750	£725

English World Combination: 25 hours of group classes per week + 5 hours 1:1 per week.

- For a 1 week course, add a supplement of £85 to the 2-3 week price above

Dates

Courses start every Monday throughout the year. Students should arrive on the Sunday.





IELTS and Cambridge Exam Preparation

- Gain access to English speaking universities
- Achieve excellent exam results and improved career prospects
- Validate your progress with qualifications recognised around the world

IELTS Exam Preparation

IELTS is the International English Language Testing System, designed for people who want to study where English is the main language of communication. Results from IELTS tests are recognised by universities, colleges and professional bodies in the UK, USA, Australia, New Zealand and throughout the world. IELTS gives you a test report that shows an overall score for your level of English ability from 1 (non-user) to 9 (expert user).

The test is made up of four parts – Listening, Reading, Writing and Speaking. The Speaking test is a face-to-face interview with a certified Examiner. The total test time is 2 hours and 45 minutes and consists of:

- Academic Reading: 3 sections, 40 items, 60 minutes
- Academic Writing: 2 tasks:
150 words and 250 words, 60 minutes
- Listening: 4 sections, 40 items, 30 minutes
- Speaking: 11 to 14 minutes

Our course helps you to:

- Be confident in handling all aspects of the exam
- Express your thoughts and opinions fluently
- Gain an expanded range of vocabulary and expressions
- Use grammar and syntax effectively
- Overcome anxiety through intensive exam practice

Add extra individual lessons

Make your course more intensive by adding 5 one-to-one hours per week for extra exam focus.

Sample Timetable

09.00 – 10.00	Skills Training
10.00 – 10.15	Break
10.15 – 11.15	Accuracy in Grammar
11.15 – 11.30	Break
11.30 – 12.30	Knowledge for a Global Community
12.30 – 13.30	Lunch
13.30 – 14.30	Examination Focus
14.30 – 14.45	Break
14.45 – 15.45	Exam Skills Spoken Performance
15.45 – 16.00	Break
16.00 – 17.00	Individual lesson (IELTS Combination)

Timetables are samples and may be subject to change.

Fees per week

Bournemouth, Brighton, Edinburgh, Cambridge, Oxford

No of weeks	2-3	4-7	8-11	12-52
IELTS	£382	£357	£332	£307
IELTS Combination	£736	£711	£686	£661

London

No of weeks	2-3	4-7	8-11	12-52
IELTS	£416	£391	£366	£341
IELTS Combination	£800	£775	£750	£725

Examination fee: IELTS - £150-£160

IELTS: 25 hours of English language skills including 5 hours of exam preparation and 5 hours of exam skills per week, plus one coaching session per week

IELTS Combination:

25 hours of English language skills including 5 hours of exam preparation and 5 hours of exam skills per week + 5 hours 1:1 per week

Dates

Courses start every Monday throughout the year. Students should arrive on the Sunday. Minimum course duration is 2 weeks.

Cambridge Exam Preparation

Cambridge ESOL certificates are awarded by a department of the world famous University of Cambridge. They are taken by over two million people a year and recognised by more than 6,000 universities, employers and immigration authorities around the world. The certificates cover listening, speaking, reading and writing giving accurate proof of your language skills.

Preparing for a Cambridge certificate helps you to master the skills you need to use English in the real world. The exams are based on real life situations where you would need to use your English skills. The certificates are linked to the Common European Framework of References for Languages as follows:

Cambridge English: First (FCE)

Level B2

FCE is an upper intermediate exam that tests your ability to deal confidently with a range of written and spoken communication situations.

Cambridge English: Advanced (CAE)

Level C1

CAE is an advanced exam that tests your ability to communicate with confidence in English for work or study purposes.

Cambridge English: Proficiency (CPE)

Level C2

CPE is a very advanced level exam, for learners who have achieved a high level of language skills.

We are an examination centre for the Cambridge ESOL exams.

Our course helps you to:

- Be confident in handling all aspects of the exam
- Be able to express your thoughts and opinions fluently
- Gain an expanded range of vocabulary and expressions
- Be able to use grammar and syntax effectively
- Overcome anxiety through intensive exam practice

Sample Timetable

09.00 – 10.00	Skills Training
10.00 – 10.15	Break
10.15 – 11.15	Accuracy in Grammar
11.15 – 11.30	Break
11.30 – 12.30	Knowledge for a Global Community
12.30 – 13.30	Lunch
13.30 – 14.30	Examination Focus
14.30 – 14.45	Break
14.45 – 15.45	Exam Skills Spoken Performance

Timetables are samples and may be subject to change.

Cambridge Exam Preparation Options at Regent Schools – 10 week courses

	Exam dates	OXF	BOU	CAM	EDI	LON	BRI
FCE							
28.12 – 07.03	07.03	✓	✓	✓	✓	✓	
04.01 – 14.03	13.03						✓
29.03 – 06.06	06.06	✓	✓			✓	✓
05.04 – 13.06	09.06			✓	✓		
27.09 – 05.12	01.12		✓	✓	✓		
04.10 – 12.12	12.12	✓				✓	✓
CAE							
28.12 – 07.03	07.03				✓		
04.01 – 14.03	14.03	✓	✓	✓		✓	✓
29.03 – 06.06	06.06	✓	✓			✓	✓
05.04 – 13.06	10.06			✓	✓		
27.09 – 05.12	02.12	✓	✓	✓	✓	✓	✓
CPE							
28.12 – 07.03	07.03	✓		✓	✓	✓	✓
05.04 – 13.06	11.06	✓	✓	✓	✓	✓	✓
27.09 – 05.12	03.12	✓	✓	✓	✓	✓	✓

Key: Oxford (OXF), London (LON), Bournemouth (BOU), Cambridge (CAM), Brighton (BRI), Edinburgh (EDI)

- Students taking the exam at the end of their course may need to book additional nights of accommodation for the week when the exams take place.

Fees per course – Cambridge Exam Preparation

25 hours of English language skills including 5 hours of exam preparation and 5 hours of exam skills per week, plus one coaching session per week

10 weeks course	
Bournemouth, Brighton,	
Cambridge, Edinburgh, Oxford	£3320
London	£3660

- Examination fees: FCE, CAE or CPE - £150-£160
- Exam entry should be booked well in advance of exam date.

Additional one-to-one lessons can be added to any course:

5 hours/week – £368/week (£400/week in London)
7.5 hours/week – £552/week (£600/week in London)

Executive ClasSIX

- Small group courses for professionals and the ambitious
- Gain the tools and skills to further your career
- Become a relaxed and confident global communicator

ClasSIX

ClasSIX is an accelerated learning programme suitable for any ambitious learner including professionals. There are no more than six participants in the morning and a choice of either one-to-one or a larger group in the afternoon.

Your goals are to:

- Gain the confidence to communicate fluently in English
- Participate on equal terms in meetings, negotiations and presentations
- Develop accuracy in grammar, idioms and vocabulary
- Understand and extract information from written documents
- Write reports, emails, letters and presentations
- Participate effectively on the telephone or via video conferencing

How we help you:

Our unique course gives you the tools, skills practice and feedback required for you to rapidly develop your fluency, accuracy and performance in a second language so that you feel at home communicating in English. The small group size gives each client a high level of trainer interaction.



The ClasSIX Programme

Task knowledge

You gain the tools to undertake a range of life and business tasks in a second language through case-studies, exercises and vocabulary extension. Skills developed include the language of meetings and negotiations, influencing and persuading, reaching a compromise, being assertive and utilising critical thinking and problem solving skills. Some of the tasks are set as homework.

Active scenario

You activate your language and skills in a dynamic scenario which uses the task knowledge above. You develop through analysis and feedback of your performance.

Knowledge for the professional community

Development of the important interpersonal and intercultural soft skills such as managing, leading and project management. This will result in vocabulary development and discussion.

Language focus

This session builds skills in telephoning, business writing (email, reports, etc) and socialising.

Confident spoken performance

In this fluency session you develop your confidence and skills in a range of speaking situations through mini role-plays, presentations and public speaking activities. With a focus on rapport building, voice quality, body language, posture and eye contact, the aim is for confident performance in a second language.

ClasSIX

We recommend these courses for clients requiring fast progress. You work on improving your core English skills, and practising English language situations relevant to you. You work on linguistic areas such as grammar, vocabulary, pronunciation, and skills such as spoken and written communication, presentations, and inter-cultural competence.

Sample Timetable

09.00 - 10.00	Task knowledge
10.00 - 10.15	Break
10.15 - 11.15	Active scenario
11.15 - 11.30	Break
11.30 - 12.30	Knowledge for the professional community
12.30 - 13.30	Lunch
13.30 - 14.30	Language focus
14.30 - 14.45	Break
14.45 - 15.45	Confident spoken performance

Timetables are samples and may be subject to change.

ClasSIX fees per week

Oxford					
No of weeks	1	2-3	4-7	8-11	12-52
ClasSIX	£634	£549	£524	£499	£474

London

No of weeks	1	2-3	4-7	8-11	12-52
ClasSIX	£681	£596	£571	£546	£521

ClasSIX: 15 ClasSIX lessons (max 6 per class) + 10 English World lessons (max 12 per class) per week. Each lesson is 60 minutes.

Dates

All ClasSIX courses start every Monday throughout the year. Students should arrive on the Sunday.

ClasSIX Combination

ClasSIX Combination is designed for clients wishing to gain the benefits of group and individual tuition. The course comprises 15 hours of small group tuition with 10 hours (Combination 10) or 15 hours (Combination 15) of one-to-one per week to focus on highly specific needs.

Sample Timetable

09.00 - 10.00	Task knowledge
10.00 - 10.15	Break
10.15 - 11.15	Active scenario
11.15 - 11.30	Break
11.30 - 12.30	Knowledge for the professional community
12.30 - 13.30	Lunch
13.30 - 14.30	1:1 lesson
14.30 - 14.45	Break
14.45 - 15.45	1:1 lesson
15.45 - 16.00	Break
16.00 - 17.00	1:1 lesson (Combination 15)

Timetables are samples and may be subject to change.

ClasSIX Combination fees per week

Oxford					
No of weeks	1	2-3	4-7	8-11	12-52
Combination 10	£1223	£1138	£1113	£1088	£1063
Combination 15	£1591	£1506	£1481	£1456	£1431

London

No of weeks	1	2-3	4-7	8-11	12-52
Combination 10	£1321	£1236	£1211	£1186	£1161
Combination 15	£1721	£1636	£1611	£1586	£1561

ClasSIX Combination: 15 ClasSIX lessons per week (max 6 per class) + 10 or 15 1:1 lessons per week. Each lesson is 60 minutes.



Individual Tuition

- One-to-one lessons for accelerated progress
- Lesson content is an exact match to the student's requirements
- Wide choice of number of lessons per week

Individual Tuition

Take our individual courses to make the fastest possible progress. Individual programmes of 30, 25, 20 and 15 hours per week are available for clients requiring the most intensive programmes.

Tailor-made for maximum progress

One-to-one lessons offer students a programme which is designed precisely to their own unique requirements. In this way, you make the maximum possible progress because the teacher is able to focus on your needs and your personal learning style in every lesson.

Throughout the day, you can supplement your lessons with self-study in our quiet areas. This helps to consolidate the work done during lessons. Teachers set self-study exercises and give direction and guidance for students to maximise their consolidation time between lessons.

English for Specific Purposes

Individual tuition programmes are ideal for those who need to improve their English language skills for specific purposes. Teachers are chosen for their experience in or background knowledge of the subject areas.

Fees per week	Bournemouth	London
Individual Tuition	Brighton, Edinburgh	
	Cambridge, Oxford	
Individual 30		
30 hours 1:1 per week		
Compact 1 week course	£2293	£2485
2-3 weeks	£2208	£2400
4-7 weeks	£2183	£2375
8-11 weeks	£2158	£2350
Individual 25		
25 hours 1:1 per week		
Compact 1 week course	£1925	£2085
2-3 weeks	£1840	£2000
4-7 weeks	£1815	£1975
8-11 weeks	£1790	£1950
Individual 20		
20 hours 1:1 per week		
Compact 1 week course	£1557	£1685
2-3 weeks	£1472	£1600
4-7 weeks	£1447	£1575
8-11 weeks	£1422	£1550
Individual 15		
15 hours 1:1 per week		
Compact 1 week course	£1189	£1285
2-3 weeks	£1104	£1200
4-7 weeks	£1079	£1175
8-11 weeks	£1054	£1150

Dates

Courses start every Monday throughout the year with arrival on the Sunday.



Home Tuition

- Individual programmes for professional, academic and cultural purposes
- Study one to one in the teacher's home for fast progress
- Total immersion - learning from morning to night for increased fluency
- Wide choice of academic and cultural locations

Live and learn in the home of your teacher

Home Tuition is a unique programme combining intensive language training and living in the home of your personal tutor. It is a highly intensive total immersion course in which your language skills develop quickly and naturally. The programme is suitable for general purposes, business purposes or academic purposes. In your one-to-one lessons you learn the essential skills, knowledge and language that you need. Outside lessons there are many opportunities for you to practise and refine your English - over breakfast, lunch and dinner, during tea and coffee breaks, and when doing activities each week with your teacher or their family and friends.

Locations

All our Home Tuition teachers are located within one hour's travelling time of Regent schools in Brighton, Bournemouth, Cambridge, Edinburgh, London and Oxford. At the start of your course you are given a copy of the school's social programme. You are then able to come and go from the school as much as you wish and can take part in any parts of the leisure programme you want. This gives you the benefits of mixing with other international students and teachers, taking part in a full and varied social and cultural programme in addition to the three half day activities arranged by your Home Tuition teacher.

Supported Learning

Each Regent school has a Home Tuition Director of Studies. It is their role to liaise with you and your teacher on a regular basis. An initial meeting at the school is arranged for you to discuss your requirements from the course. The Director of Studies will also introduce you to the school, the social programme and its facilities such as the student lounge and computer centre which you may use at any time you wish. You will receive a weekly phone call from the Director of Studies to monitor your language level and progress.

Fees per week Home Tuition	Bournemouth, Brighton, Cambridge, Edinburgh, Oxford	London
25 one-to-one hours		
1 week	£2165	£2400
2-3 weeks	£2080	£2315
4-7 weeks	£2055	£2290
20 one-to-one hours		
1 week	£1797	£2000
2-3 weeks	£1712	£1915
4-7 weeks	£1687	£1890
15 one-to-one hours		
1 week	£1429	£1600
2-3 weeks	£1344	£1515
4-7 weeks	£1319	£1490

Dates

Course dates: arrive any Sunday during the year, departure is the Saturday.

Additional Accommodation

En-suite accommodation supplement per week: £105

Taxi transfers – one way

	London Heathrow	London Gatwick	Stansted	Edinburgh
Bournemouth	£142	£162	-	-
Brighton	£172	£92	-	-
Cambridge	£152	£162	£77	-
Edinburgh	-	-	-	£52
London	£97	£107	£117	-
Oxford	£137	£177	-	-





Regent Scanbrit in Bournemouth

- Focused atmosphere, ideal for serious study
- Individual attention in a close-knit school community
- Location close to the beach in a quiet residential suburb of Bournemouth
- Excellent recreation and sporting facilities nearby

Ideal for focused study

We are in a quiet and safe area of town making us an ideal place for relaxed, focused study. Our homestays are conveniently located close to the school. Bournemouth's town centre is within easy reach with its vibrant nightlife and excellent theatres and restaurants. Nearby are great places to visit including the New Forest, pretty Dorset villages, and the famous Jurassic Coast. London is only 95 minutes by train.

Our school has a student lounge with wide screen TV, free internet access, and outside we have a garden used for barbecues in the summer.

We are very proud of our friendliness, our warmth of welcome, and the high levels of personal attention and support you can expect when you are with us. We are committed not only to helping you make progress with your studies, but also to enjoy a social and cultural experience in the UK.

Fact file

Minimum age	16 (18 in residence)
Facilities	Email / internet access, computer centre, garden
No lessons on	1 Jan, 25 Dec, 26 Dec
Location	300 metres from the beach, 5 km from Bournemouth city centre
What's included	All tuition, Regent file, Certificate of Achievement

Accommodation fees per week

Option	Single room
Homestay – Bed, breakfast and evening meal	£168
Summer Residence (room only, min. age 18)	£210

- Arrival day is Sunday, departure day is Saturday.

Transfers

Bournemouth is well served by bus and train connections from the UK's airports. Tickets are purchased by the student at the time of travel. Alternatively, we offer a personal taxi service on arrival and departure. The taxi reservation is made by the school and charged on the course invoice.

	Airport bus	Train	Taxi (one way)
Gatwick	£40 (National Express)	£40	£162
Heathrow	£30 (National Express)	£40	£142
Southampton			£82
Bournemouth			£42

Bus and train fares are approximate

Regent Brighton

- Dynamic university city
- Lively seaside location
- Buzzing cosmopolitan atmosphere

An exciting university city

Brighton is an exciting city by the sea with more hours of sunshine than almost anywhere else in the UK. It is close to beautiful countryside and only 50 minutes from London. There are two universities and the city is famous for its social life and entertainment. There's always lots to do in Brighton, making it a very attractive place to study.

The school occupies an elegant building in a leafy residential area within easy reach of the city centre and the seafront. There is free wireless internet access. Our student lounge is open throughout the day where you can relax and talk with your new friends. Your teachers help organise your after-school activities programme, so you get to know them socially.

Fact file

Minimum age	16 (18 in residence)
Facilities	Email / internet access, videos, computer centre, student lounge, garden
No lessons on	1 Jan, 25 Dec, 26 Dec
Location	South coast - London 80km
What's included	All tuition, Regent file, Certificate of Achievement

Accommodation fees per week

Option	Single room
Homestay – Bed, breakfast and evening meal	£168
Ensuite Homestay – Bed, breakfast and evening meal	£273
Summer Residence ensuite (room only, min. age 18) Self-catering	£280

- Arrival day is Sunday, departure day is Saturday

Transfers

Brighton is well served by bus and train connections from the UK's airports. Tickets are purchased by the student at the time of travel. Alternatively, we offer a personal taxi service on arrival and departure. The taxi reservation is made by the school and charged on the course invoice.

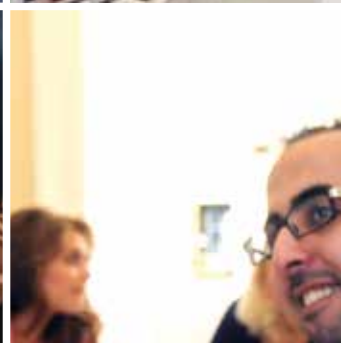
	Airport bus	Train	Taxi (one way)
Gatwick	£9 (National Express)	£8	£92
Heathrow	£30 (National Express)	£50	£172

Bus and train fares are approximate

Regent Brighton

18 Cromwell Road Hove BN3 3EW Tel: +44 (0)1273 731 684 Email: brighton@regent.org.uk





Regent Cambridge

- A unique academic atmosphere
- Study in a world famous city
- Friendly and efficient city centre school
- Exciting cultural and social activities

An unique university atmosphere

One of the most famous cities for learning in the world, Cambridge is beautiful, historic and home to Cambridge University. You can visit colleges and museums, learn how to punt on the River Cam, or just relax and have fun in the city's many restaurants and bars. There is lively nightlife, and entertainment for everyone.

We specialise in programmes that prepare students for university in the UK. We are experts in IELTS preparation.

In the middle of one of the liveliest and most cosmopolitan areas of central Cambridge, our school has excellent facilities including a student lounge, café, and large patio garden.

Fact file

Minimum age	16 (18 in residence)
Facilities	Email / internet access, computer centre, student lounge
No lessons on	1 Jan, 25 Dec, 26 Dec
Location	London 80 km
What's included	All tuition, Regent file, Certificate of Achievement

Accommodation fees per week

Option	Single room
Homestay – Bed, breakfast and evening meal	£185
Ensuite Homestay – Bed, breakfast and evening meal	£290
Residence (summer only, min. age 18) Bed, breakfast	£340

- Arrival day is Sunday, departure day is Saturday

Transfers

Cambridge is well served by bus and train connections from the UK's airports. Tickets are purchased by the student at the time of travel. Alternatively, we offer a personal taxi service on arrival and departure. The taxi reservation is made by the school and charged on the course invoice.

	Airport bus	Train	Taxi (one way)
Gatwick	£35 (National Express)	£30	£162
Heathrow	£30 (National Express)	£40	£152
Stansted	£10 (National Express)	£10	£77
Luton	£20 (National Express)	£35	£92

Bus and train fares are approximate

Regent Edinburgh

- Historic architecture and dramatic city setting
- Warm, friendly and welcoming atmosphere
- Study in Scotland's vibrant and cosmopolitan capital

A cultural experience in Scotland's capital

Edinburgh is an exciting, cosmopolitan city offering many attractions to visitors including a great many museums, galleries and buildings of historical and architectural interest. As a university city, it caters for students and offers a fantastic social life. Edinburgh is also the home of the August Edinburgh Festival and New Year street party which are both visited by thousands of people every year. Places of interest include Edinburgh Castle and the Scottish Parliament. The spectacular Highlands are within easy reach of the city.

The school is located in a beautiful Georgian building in the city centre, a short walk from the famous Princes Street, Edinburgh Castle and the Botanic Gardens. The facilities include bright spacious rooms, free internet and email access and wireless connections for laptops. We also have a library, student common room with TV, drinks and snack facilities.

Fact file

Minimum age	16 (18 in residence)
Facilities	Email / internet access, DVDs and lending library, computer centre, student lounge
No lessons on	1 Jan, 25 Dec, 26 Dec
Location	City centre
What's included	All tuition, Regent file, Certificate of Achievement

Accommodation fees per week

Option	Single room
Homestay – Bed, breakfast and evening meal	£185
Ensuite Homestay – Bed, breakfast and evening meal	£290
Summer Residence (summer only, min. age 18) Self-catering	£325

- Arrival day is Sunday, departure day is Saturday

Transfers

Edinburgh is well served by bus and train connections from the UK's airports. Tickets are purchased by the student at the time of travel. Alternatively, we offer a personal taxi service on arrival and departure. The taxi reservation is made by the school and charged on the course invoice.

	Airport bus	Taxi (one way)
Edinburgh	£4 (Edinburgh Airlink)	£52

Bus and train fares are approximate

Regent Edinburgh

21 Abercromby Place Edinburgh EH3 6QE Tel: +44 (0)131 225 9888 Email: edinburgh@regent.org.uk





Regent London

- Magnificent school in the heart of the capital
- Ideal for a memorable and exciting stay in England
- Close to London’s many tourist attractions and dynamic social life

Study in the heart of the capital

Our prestigious school is in the heart of London. Trafalgar Square, Covent Garden, Leicester Square and London Theatreland are just moments away. Our staff can advise you how best to use your time - perhaps visiting the National Gallery, or going on a boat trip on the Thames, or seeing a top London show? In London there really is something for everyone.

Established in 1964, Regent London was the first Regent school. We have over 40 years' experience of teaching English so you can be sure of reaching your academic goals with us.

Our 300 year old school building is part of London's history - it belonged to the famous diarist, Samuel Pepys. It is next to Embankment Gardens and the River Thames - a quiet oasis of learning in the heart of busy London.

Rewarding experience

The school offers an extremely comfortable learning environment equipped for all your study needs. Our school team is dedicated to giving each student a rewarding learning experience and enjoyable stay. As our school is truly multinational, you will have lots of opportunities to practise your English and mix with people and cultures from around the world.

Fact file

Minimum age	16 (18 in residence)
Facilities	Email / internet access, student lounge, computer centre
No lessons on	1 Jan, 25 Dec, 26 Dec
Location	Central London
What's included	All tuition, Regent file, Certificate of Achievement

Accommodation fees per week

Option	Single room
Homestay – Bed, breakfast and evening meal	£265
Ensuite Homestay – Bed, breakfast and evening meal	£370
Ensuite Residence – Self-Catering, en-suite room (min. age 18)	from £330-£420
Standard Residence – Self-Catering (min. age 18)	from £330-£420
Summer Residence (July & Aug)	
Self-catering, en-suite room (min. age 18)	£330

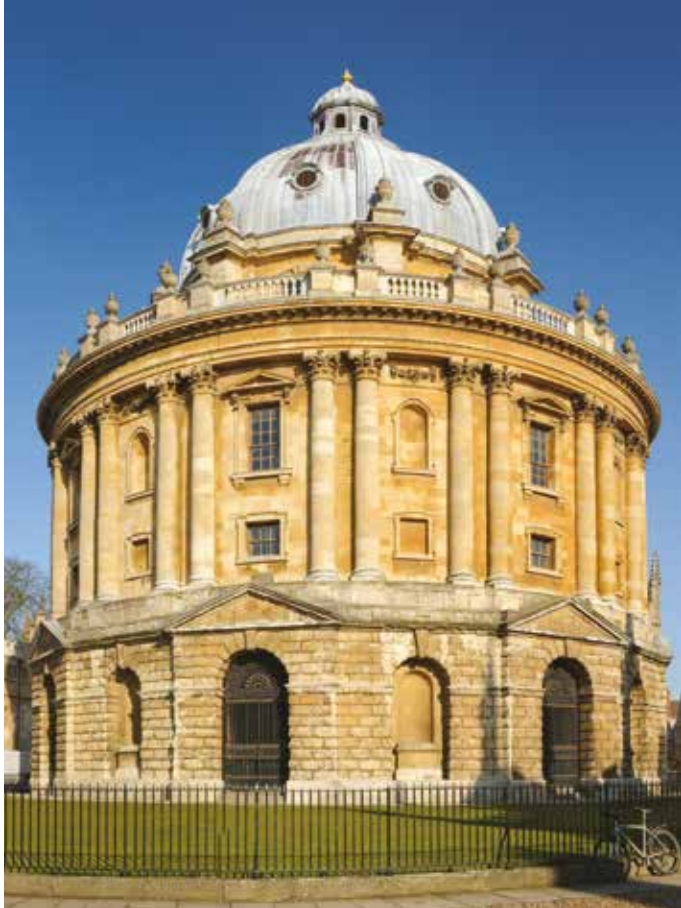
• Arrival day is Sunday, departure day is Saturday

Transfers

London is well served by bus and train connections from the UK's airports. Tickets are purchased by the student at the time of travel. Alternatively, we offer a personal taxi service on arrival and departure. The taxi reservation is made by the school and charged on the course invoice.

	Airport bus	Train	Taxi (one way)
Gatwick	£10 (National Express)	£20	£107
Heathrow	£10 (National Express)	£20	£97
Stansted	£10 (Easybus)	£25	£117
London City	£10 (National Express)	£5 (Underground)	£102
St Pancras	£5 (London bus services)	£5 (Underground)	£67

Bus and train fares are approximate



Regent Oxford

- World famous university city
- Impressive school with large gardens
- Ideal for serious, driven learners
- Enjoy Oxford's elite academic atmosphere

Experience a city rich in history

Oxford is world famous for its university, and it has a huge amount to offer its visitors. There are lots of cultural events, a lively social scene, beautiful buildings and a variety of international restaurants. The city is steeped in history and the air of academic excellence is reflected in our school's culture. Students often comment that the unique atmosphere of the school is both professional and personal.

The school is situated in an impressive Victorian building surrounded by a picturesque, typically English garden very near to the centre of Oxford.

Students use our library and resource room, student lounge, conservatory, computer centre with free internet access and wireless and coffee shop. We are open on Sundays and offer an exciting social programme with plenty of cultural events as well as weekend excursions.

Learning experience

Regent Oxford is a centre of academic excellence for which we have been renowned locally and internationally since we were established in 1953. Our goal is to provide you with a learning experience that will have an immediate impact and a lasting effect on your life.

Fact file

Minimum age	16 (18 in residence)
Facilities	Email / wireless internet access, computer suite, garden and conservatory, library, student lounge and coffee shop
No lessons on	1 Jan, 25 Dec, 26 Dec
Location	Oxford city centre 1.5 km, London 80 km
What's included	All tuition, Regent file, Certificate of Achievement

Accommodation fees per week

Option	Single room
Homestay – Bed, breakfast and evening meal	£185
Ensuite Homestay – Bed, breakfast and evening meal	£290
Residence	
Standard room (min. age 18)	£350
En-suite room (min. age 18)	£400
Luxury Apartments	from £600

- Arrival day is Sunday, departure day is Saturday

Transfers

Oxford is well served by bus and train connections from the UK's airports. Tickets are purchased by the student at the time of travel. Alternatively, we offer a personal taxi service on arrival and departure. The taxi reservation is made by the school and charged on the course invoice.

	Airport bus	Train	Taxi (one way)
Gatwick	£30 (Airline bus)	£40	£177
Heathrow	£20 (Airline bus)	£40	£137
Luton	£20 (National Express)	£40	£167

Terms and Conditions

How to book a course

To secure a place on a Regent course, please return the Enrolment Form together with payment of a non-refundable deposit or book online at www.regent.org.uk.

Payment of fees

On receipt of the application and deposit a letter of confirmation is sent with a Statement of Fees which should be settled at least 4 weeks before the course starting date. In the case of registration less than 6 weeks before the course starting date, the full amount of the cost of the course must be sent with the Registration Form. PLEASE NOTE: students will not be allowed to start their course unless FULL PAYMENT has been received by the School. All bank charges must be paid by the student. PLEASE NOTE: if you require a visa the school will provide the visa letter or Certificate of Acceptance of Studies (CAS) only when full payment has been received by the school. All bank charges must be paid by the student. In the event of an unsuccessful application all fees will be returned in full, less the cost of the CAS.

Accommodation address

Students who have requested the School to book host family accommodation on behalf of the student will receive details of their host family address at least 5 days before the course starting date, unless they enrol late. This enables those students travelling independently to let the host family know of their approximate time of arrival.

Conditions for cancelling or changing a course by the Student

- If the School receives the cancellation before the course starting date, the School will retain the deposit.
- After the course has started, a student must give 10 days' written notice to the Principal of changes to or cancellation of a course. A cancellation fee equivalent to 1 week's course fees will be charged. Refunds cannot be made for non-attendance, absence due to illness or any other cause.
- If a student wishes to be absent from the course for 1 or 2 weeks for the purposes of taking a holiday s/he must give the Principal at least 2 weeks' notice in writing.
- Students who choose to exchange their original choice of course for one of greater value must pay the difference between the two at the time of requesting the upgrade.
- Any refund due when a course is changed or cancelled, or a holiday taken, will be paid to the person who paid for the student's course at his/her home address at the end of the course. 'End of the course' here is defined as the last date of the course specified on the booking form (i.e. if a student books a 12 week course and decides to leave after 4 weeks s/he will not be refunded until 12 weeks after the start of the course).
- If a student is denied a student visa or a study permit and provides the School with a copy of the rejection letter on or before the first day of classes, the School will refund the course fee.

Change or Cancellation of a course by the School

Sometimes it is agreed between the School and a student that it would be beneficial for the student to be moved to another School course. When this happens only a course of at least equivalent cost will be offered by the School.

The School reserves the right to cancel a course, or make changes to course arrangements, without liability, if forced to do so for reasons beyond its control. If this happened, the School would seek to offer alternative arrangements, dates or venues.

If the School cancelled a course booked and paid for by a student in accordance with these terms other than for reasons beyond its control, and did not offer an alternative acceptable to the student, the School would pay compensation as follows:

- Where the cancellation is before the start of the course, compensation equal to the deposit paid by the student or
- Where the cancellation is after the start of the course, compensation equal to one week's fees.

Liability and Insurance

Students should make sure that they organise their own travel insurance to cover medical costs and repatriation costs in the case of an illness or accident.

The School acts only as an intermediary between its students and travel organisations and between students and host families. Unless and to the extent caused by the School's negligence, the School cannot be held responsible for any delay or accident during a journey nor for any incident which may happen during the student's stay with the host family. The School will, however, endeavour to defend the student's interests in the event of breach of contract on the part of the travel organisation or the host family.

The School reserves the right not to allow on the course a student suffering from any illness, medical condition, or mental or physical disability which has not been disclosed on the Registration Form.

This brochure, issued by the School, gives the only terms and information that can be referred to in the event of a disagreement between the student and the School. These terms and conditions are governed by English law and do not affect your statutory rights under English law.

Personal Information and Photographs

We use the personal information that you give us, including information about your health and religious or dietary requirements, to perform our contract with you. We may also use it to ensure that we comply with UK law, for internal training, or to send you further information about our courses and services. We do not share your details with third parties other than as necessary to perform our contract with you. The information you give us is kept securely on our computer system, and is accessible by the schools and offices in the group of companies to which the School belongs, including those outside the European Union. If you do not want to receive further information from us, please write to us at the address below. Please contact us if you want to see a copy of the information we hold, or have questions about our use of your information.

The School reserves the right to use photographs taken during courses to illustrate its promotional material. If a student wishes that his or her photo should not appear in this material, they should advise the School during the photo-shoot. These photos have no commercial or contractual value.

Information about the School

In these terms "the School" means the Regent School where you book your course.

The school is closed on 25 December, 26 December and 1 January.

In the UK, Regent courses are operated by Instill Education Limited, a company registered in England and Wales under company number 01293463, with registered office at 38 Binsey Lane, Oxford, OX2 0EY United Kingdom.

Tel: +44 (0)1865 258300 Fax: +44 (0)1865 244696

All information correct at time of printing.

Enrolment Form

Choose your location, course and dates

Regent School: Bournemouth Brighton Cambridge Edinburgh London Oxford

Please choose your course:

- | | | |
|----------------------------------------------------|---------------------------------------------------------|-------------------------------------------------|
| <input type="checkbox"/> English World 33 | <input type="checkbox"/> IELTS Exam Preparation | <input type="checkbox"/> ClasSIX |
| <input type="checkbox"/> English World Combination | <input type="checkbox"/> IELTS Combination | <input type="checkbox"/> ClasSIX Combination 10 |
| <input type="checkbox"/> English World 22 | <input type="checkbox"/> Cambridge Exam Preparation FCE | <input type="checkbox"/> ClasSIX Combination 15 |
| | <input type="checkbox"/> Cambridge Exam Preparation CAE | |
| | <input type="checkbox"/> Cambridge Exam Preparation CPE | |
| <input type="checkbox"/> Individual 30 | <input type="checkbox"/> Home Tuition 25 | |
| <input type="checkbox"/> Individual 25 | <input type="checkbox"/> Home Tuition 20 | |
| <input type="checkbox"/> Individual 20 | <input type="checkbox"/> Home Tuition 15 | |
| <input type="checkbox"/> Individual 15 | | |

Additional one-to-one hours per week? 5 hours per week 7.5 hours per week

Course start date:

Course finish date

Choose your accommodation

If you choose a residence, please write 1st and 2nd choices

Homestay single room Homestay en-suite Hotel Residence 1st _____ 2nd _____

Accommodation start date:

Accommodation finish date:

Please tell us about any special requirements (eg: disability, allergies, diet)

Do you smoke? Yes No

Would you prefer non-smoking accommodation? Yes No

What is your level of English?

Beginner Elementary Pre Intermediate Intermediate Upper Intermediate Advanced Very Advanced

Have you studied with Regent before? Yes No Which School? _____

When? _____

Transfers

Would you like a taxi transfer to your accommodation?

Yes on arrival Yes on departure Yes on arrival and departure No

Arrival: Airport/Station _____

Flight number _____

Date (dd/mm/yy) _____

Time _____

Departure: Airport/Station _____

Flight number _____

Date (dd/mm/yy) _____

Time _____

Medical and Travel Insurance

You must have Medical and Travel Insurance if you book a course with us. Please send us proof that you have adequate cover.

I attach proof of my cover

Documents by courier

We can send your documents to you by email, fax or post. If you would like them sent by international courier we charge £50.

I would like my documents sent by international courier (£50).

Calculating your fees

I would like to pay the full fees I would like to pay the deposit of £300 now and the full fees 30 days before the course starts

Course fee _____

Additional one-to-one lessons _____

Accommodation fee (except Home Tuition where accommodation is included in the course fee) _____

Transfer fee _____

Documents sent by courier fee _____

Total cost _____

Enrolment Form

Personal Details (Please write in CAPITALS)

Family Name _____ First Name _____

Nationality _____ Occupation _____ Date of Birth Day: _____ Month: _____ Year: _____

Male Female Age _____ First Language _____ Second Language _____

How did you hear about Regent? _____

Who is paying for your course? Myself Parents Company Other

Name in Passport _____ Passport Number _____

Home Address _____

Email _____ Tel _____ Mobile _____ Fax _____

Address for invoice (if different) _____ Emergency Contact During Course: _____

_____ Tel _____

_____ Email _____

Reason for studying: Academic Professional Other

Name of your college/university (students) _____

Name of your company (professionals) _____

Method of Payment (please tick):

Cheque (UK £ Sterling only) Credit/Debit Card Bank Transfer Travellers Cheques/Cash

Cheque (UK £ Sterling only)

Drawn on a British Bank made payable to Regent Language Training. Please write the student's name on the back of the cheque.

Credit Card Visa Mastercard

I hereby authorise Regent to charge the deposit of: £300 to my card

I hereby authorise Regent to charge the balance of: £_____ to my card 30 days before the course starts

I hereby authorise Regent to charge the full amount of: £_____ to my card now

Card number Security Code (last 3 digits on reverse of card)

Valid from Expiry date Name of cardholder _____

Address of cardholder _____

Signature of cardholder _____

Your agreement and signature

1. I have read and understood the Terms and Conditions.
2. I certify that all the information given by me in this enrolment form is accurate and complete.
3. If applicant is under 18, a parent or guardian must sign this form.
In doing so, the parent or guardian agrees to the Terms and Conditions.
4. I agree to the use of my personal information, including health and religious or dietary requirements, set out in the terms and conditions. Yes No
5. I agree that you can send me occasional information about Regent Language Training courses and services. Yes No

Signature of student _____ Date _____

Signature of parent or guardian (If student is under 18) _____ Date _____

Internationally recognised English language exams for academic and specific purposes

Exam	Typically for	Frequency of exams
Cambridge English Exams: <ul style="list-style-type: none"> • Cambridge English: Preliminary (PET) • Cambridge English: First (FCE) • Cambridge English: Advanced (CAE) • Cambridge English: Proficiency (CPE) 	Entrance into English speaking educational institutions, businesses and supporting immigration applications.	<p>PET: Exams are held at least once a month Spring, Summer, Autumn and Winter in the UK and the rest of the world</p> <p>FCE: Exams are held at least once a month in the UK and the rest of the world</p> <p>CAE: Exams are held every month in the UK and the rest of the world</p> <p>CPE: Exams are held in March, May, June, July, October, November, December in the UK and the rest of the world</p>
IELTS – International English Language Testing System	Entrance into British universities but is recognised by academic institutions all over the world	The General exam is held twice every month and the Academic exam is held 4 times a month. Both can be taken in the UK and the rest of the world
TOEIC – Test of English for International Communication	Applications to international businesses and organisations	Held every 4 weeks in in various locations in the UK and the rest of the world
TOEFL – Test of English as a Foreign Language	Entrance into American academic institutions	Can be taken on various dates from August to October throughout the UK, USA and the rest of the world
BULATS – Business Language Testing Service	Worldwide business and industry recruitment	It is an online exam so can be taken at any time of the year in designated test centres, including Regent Schools, throughout the UK and the rest of the world
GMAT – Graduate Management Assessment Test	Entrance into graduate programmes such as MBAs	It is an online exam so can be taken at any time of the year at designated test centres throughout the UK and the rest of the world, including Regent schools
TOLES – Test of Legal English Skills	Entrance into international commercial law firms, in-house legal teams in private companies and top-class translators	Exam can be taken in January, March, June, August and November in the UK and the rest of the world

Visit our website for more information
www.regent.org.uk

Contact: info@regent.org.uk
or call +44 (0) 1865 258 300
for more information



Regent Language Training

Memorable and motivating English language programmes in the UK
For Young Learners 13-17 years and 7-12 years
In summer and all year round

2015

www.regent.org.uk



Courses for young learners
7-12 years, 13-17 years

Contact: younglearners@regent.org.uk
for more information

