



**NEW
PROGRAMME
FOR 2018**
EXCITING THEMED
WEEKS

WINTER EXPLORER

BELL ST ALBANS | 1-6 WEEKS | 07 JANUARY – 17 FEBRUARY 2018 | AGE 11-17



bellenglish.com/young-learners | +44 (0)1223 275598 | enquiries@bellenglish.com

COURSE PROGRAMME



#mybellstory

VALERIA

PERU

I've really enjoyed our lessons and afternoon activities. I have learnt English as well as other languages through the friends I have made at Bell. My friends are from countries such as: Brazil, Japan and China. I think both my speaking and vocabulary has improved – I now know lots more words. I will miss the staff and the friends I have made at Bell.

SAMPLE TIMETABLE

	SUNDAY	MONDAY	TUESDAY	WEDNESDAY	THURSDAY	FRIDAY	SATURDAY
8.00	BREAKFAST FOLLOWED BY MORNING MEETING						
9.00	Arrivals	Language test	Language lesson	Full day study tour LONDON Science Museum	Language lesson	Language lesson	Departures or full day study tour CAMBRIDGE Punting
		BREAK			BREAK		
		Orientation/ language lesson	Language lesson		Language lesson	Language lesson	
12.30		LUNCH			LUNCH		
15.00		Language lesson	Elective		Elective	Project presentation	
		BREAK		BREAK			
		Elective	Elective		Elective	Elective	
17.30		HOUSE TIME			HOUSE TIME		
18.00	DINNER AND FREE TIME						
19.30	Evening activities						
21.00	HOUSE MEETINGS						

COURSE SUMMARY

AGE	11-17
LANGUAGE LEVEL	All levels
COURSE LENGTH	1-6 weeks
COURSE DATES	January and February
STAFF TO STUDENT RATIO	1:6

COURSE COMPONENTS (1 WEEK)

LESSONS	15 HOURS
STUDY TOURS	1-2 DAYS
ELECTIVES	9 HOURS
OTHER ACTIVITIES	9 HOURS



COURSES INCLUDE:

- Tuition, learning materials, course portfolio and end-of-course certificate
- Residential accommodation and all meals
- All social activities and study tours
- Comprehensive supervision by qualified and experienced staff
- Transfers from and to designated airports on scheduled arrival and departure days
- Free internet access
- Use of sports facilities
- Free laundry service
- Comprehensive insurance

COURSE DESCRIPTION

Designed around five exciting project themes, students learn through project-based lessons, study tours and a choice of academic, active and creative electives.

PROJECT THEMES:

- Week 1: Winter Wonderland
- Week 2: Eureka!
- Weeks 3 and 4: Here, There and Everywhere
- Week 5: Picture This
- Week 6: Sharing the Planet

STUDY TOURS

Students enjoy three full day study tours per two week course. Destinations include:

- London sights and museums
- Harry Potter studio tour
- Cambridge
- Stratford-Upon-Avon

Students booking a course that includes 26-28 January will also enjoy a three-day trip to Edinburgh, Scotland's historic capital.

ELECTIVES

Elective sessions are taught by experienced activity leaders and develop students' English skills. A mix of active, academic and creative options are available.

ACTIVITIES

After lessons, electives, and a delicious dinner, students enjoy a whole-school evening activity.

COURSE OUTCOMES

Your child will develop:

- **More confidence** and be more independent as a learner and user of English
- **Improved English language skills** (reading, writing, listening and speaking)
- **More vocabulary, better pronunciation and an increased understanding of grammar** appropriate to their level
- **Essential life skills** such as teamwork, independent study, communication and the ability to take responsibility for their own learning
- **A network of international friends**
- **A portfolio of work** demonstrating progress, achievements and new experiences.

PROGRESS TO:

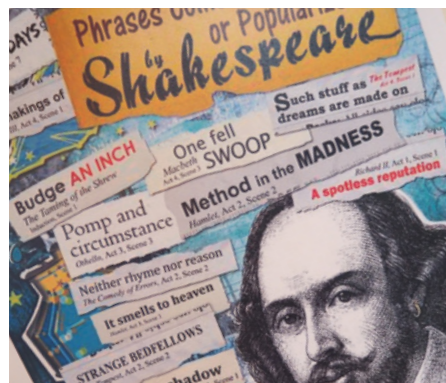
- ➔ English Explorer at a different school or different time of the year
- ➔ Intensive Academic English
- ➔ Young Business Leaders
- ➔ Young Cambridge Scholars.

WEEK/S	THEME	ARRIVAL DATE	COURSE OPTIONS												
1	WINTER WONDERLAND	SUNDAY 07 JANUARY	6 WEEKS	5 WEEKS	5 WEEKS	4 WEEKS	4 WEEKS	4 WEEKS	3 WEEKS	3 WEEKS	2 WEEKS	2 WEEKS	1 WEEK	1 WEEK	
2	EUREKA!	SUNDAY 14 JANUARY													
3 AND 4	HERE, THERE AND EVERYWHERE	SUNDAY 21 JANUARY	3-DAY TRIP TO EDINBURGH (26-28 JANUARY)												
5	PICTURE THIS	SUNDAY 04 FEBRUARY	6 WEEKS	5 WEEKS	5 WEEKS	4 WEEKS	4 WEEKS	4 WEEKS	3 WEEKS	3 WEEKS	2 WEEKS	2 WEEKS	1 WEEK	1 WEEK	
6	SHARING THE PLANET	SUNDAY 11 FEBRUARY													
FEES (£)			6110	5150	5265	4190	4305	4250	3345	3290	2030	2330	1920	1015	960

In addition to course fees, all bookings are subject to a £95 registration fee.

WEEK 1: WINTER WONDERLAND

SUNDAY 07 JANUARY – SATURDAY 13 JANUARY



Students will develop their English skills through learning about the magic of winter. They will learn how animals and plants survive during the winter months and explore the role winter plays in British literature.

Topics may include:

- Famous British authors (Lewis Carroll, C.S. Lewis, Arthur Conan Doyle and J.K. Rowling)
- Winter traditions and customs
- The environment in winter

EXAMPLE LEARNING OUTCOMES

- Students improve their reading skills by studying classical and contemporary British literature
- Students gain a better knowledge of language structures, vocabulary, style and genre and how all of these are used in different literary contexts
- Students collaborate to create a presentation about winter traditions and customs from their home countries

WEEK INCLUDES:



PLUS FULL DAY STUDY TOUR TO CAMBRIDGE

WEEK 2: EUREKA

SUNDAY 14 JANUARY – SATURDAY 20 JANUARY



Explore scientific discoveries from the past, present and future. Students will learn about the most influential inventions and discoveries from the last century and will use their own talents to invent a new product.

Topics may include:

- Famous inventions and scientific discoveries
- The future – what inventions will tomorrow bring?
- Great ideas from the UK and beyond

EXAMPLE LEARNING OUTCOMES

- Students enjoy an opportunity to work creatively as they design a new product to solve a problem in our daily lives
- Students improve their use of English grammar e.g. tenses, conditional forms and modal verbs
- Students develop their communications skills through group discussions, making suggestions and giving advice

WEEK INCLUDES:



PLUS FULL DAY AT BIRMINGHAM THINK TANK

WEEKS 3 AND 4: HERE, THERE AND EVERYWHERE

SUNDAY 21 JANUARY – SATURDAY 03 FEBRUARY



Earth is home to billions of people from a wide range of cultures. On this two-week intensive project students will learn about all aspects of human geography, from the world's diverse population to travel and transport.

As part of this fascinating project, students will visit one of the UK's most historic and beautiful cities, Edinburgh. During their three day Scottish adventure, they will see

famous sites such as: Edinburgh Castle, the Museum of Scotland and Calton Hill. They will also get to experience life in Scotland by trying famous Scottish foods and taking part in traditional pastimes such as ceilidh dancing.

Students will receive the same amount of tuition as the other weeks (30 hours over two weeks).

This project will cover topics such as:

- Diversity and the differences between us
- Transport and travel
- Human migration: the movement of people from one place to another
- Globalisation: the world becoming more connected
- National identity: how does it influence your personality?



EXAMPLE LEARNING OUTCOMES

- Students learn about the differences between their home countries and the UK
- Students improve their writing skills by producing a travel blog
- Students build their confidence by presenting about their cultures
- Students develop their communication skills through taking part in debates and discussions

2 WEEK PROJECT INCLUDES:



PLUS FULL DAY STUDY TOURS TO LONDON AND STRATFORD-UPON-AVON, AND A HALF-DAY WALKING TOUR OF ST ALBANS

THREE DAY VISIT TO EDINBURGH

WEEK 5: PICTURE THIS

SUNDAY 04 FEBRUARY – SATURDAY 10 FEBRUARY



Students will get the opportunity to explore their creative side with this artistic theme. During the week, they will use their imagination, creativity and English language skills to produce a variety of art forms.

Topics may include:

- Creative writing
- Film-making
- Photography

EXAMPLE LEARNING OUTCOMES

- Students develop their creative skills through working independently and in groups
- Students improve their English language skills: reading, writing, speaking and listening
- Students learn to express their ideas and opinions through critical analysis of art forms

WEEK INCLUDES:

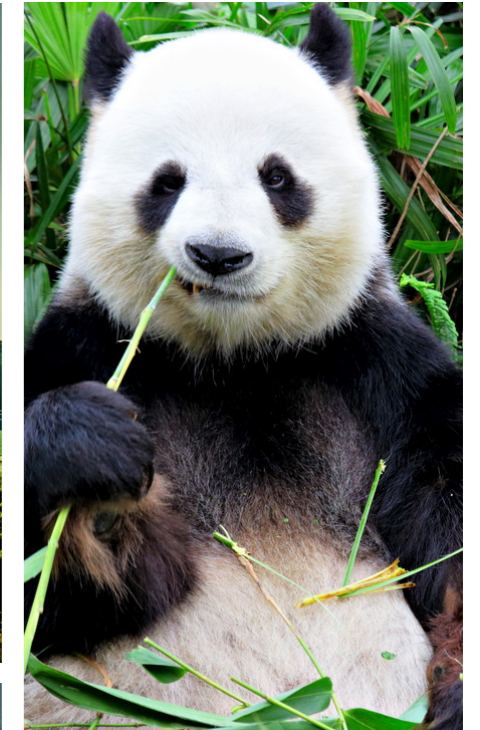


PLUS A VISIT TO MADAME TUSSAUDS

HARRY POTTER STUDIO TOUR

WEEK 6: SHARING THE PLANET

SUNDAY 11 FEBRUARY – SATURDAY 17 FEBRUARY



Students will increase their awareness of global issues and explore the impact humans are having on the planet. They will share what they have learnt through creating posters and information leaflets.

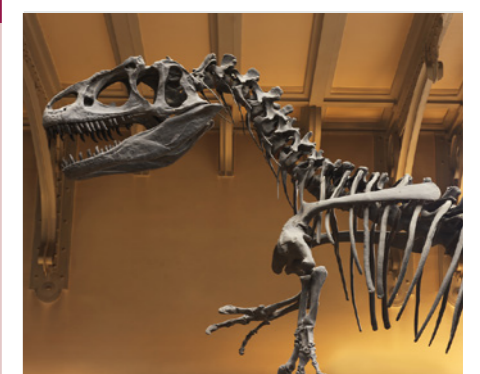
Topics may include:

- The environment
- Animals and their habitats
- Global warming and renewable energy

EXAMPLE LEARNING OUTCOMES

- Students improve their communication skills and confidence through participating in debates, discussions and giving presentations
- Students practise learning independently and in groups by researching different types of renewable energies
- Students develop critical thinking and problem solving skills through learning about current issues affecting the planet

WEEK INCLUDES:



VISIT TO THE NATURAL HISTORY MUSEUM

BELL ST ALBANS



Enjoy discovering the English language in a beautiful and friendly year-round school located close to London.



SAMPLE ELECTIVES

Active Electives

- Archery
- British School Games
- Football
- Health and Fitness

Academic Electives

- British Literature
- Creative Writing
- Journalism
- Presentations and Debates

Creative Electives

- Art and Design
- Dance
- Drama
- Photography and Film-making

FACILITIES

- Bright, spacious classrooms with interactive whiteboards
- Free wireless internet
- Computer study centre
- Dining room
- Student common room
- Art room
- Disabled access/facilities
- On-site sports facilities including sports fields and an archery range
- Peaceful, countryside setting

ACCOMMODATION

- Single, twin and triple rooms
- A dedicated houseparent in every zone
- Separate accommodation blocks for boys and girls

TRAVEL

- FREE transfers on scheduled arrival and departure days from:
- London Stansted
 - London Heathrow
 - London Luton
 - Ebbfleet Eurostar

